

*E* •

•

•

•

•

•



•

•

•

•

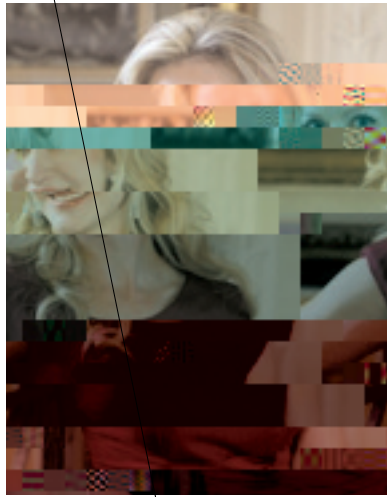


**Members of the Platform Party**

Steven B. Abramson, MD

# HONORS TO BE CONFERRED

## Valentine Mott Founders Award



### Fiona B. Druckenmiller

*Trustee, NYU Langone Medical Center Board of Trustees*

Fiona Druckenmiller has been an NYU Langone Medical Center Trustee since 2006 and joined the NYU Board of Trustees in September 2016. She is the owner of FD Gallery, a boutique on the Upper East Side specializing in rare and vintage jewelry and objects d'art, and was previously a portfolio manager with Dreyfus Corporation. Ms. Druckenmiller is an honorary trustee and former vice chair of the American Museum of Natural History and is on the leadership council of the New York Stem Cell Foundation. She is also a director of the Druckenmiller Foundation and Bloomberg Philanthropies.

Fiona Druckenmiller received her Bachelor of Science degree with honors from Barnard College, and received her MBA degree from NYU Leonard N. Stern School of Business. She is married to Stanley Druckenmiller and they have three daughters, Tess, Hannah and Sarah, a 2016 graduate of NYU School of Medicine. The Druckenmillers are lead supporters of the Neuroscience Institute at NYU Langone and also endowed the Druckenmiller Professorship in Emergency Medicine.

## Master Clinician

## Master Educator

### Molly E. Poag, MD

*Clinical Associate Professor of Psychiatry*

*Director of Medical Student Education in Psychiatry*

Molly Poag, MD is a clinical associate professor of psychiatry at NYU School of Medicine (NYUSOM), and director of medical student education in psychiatry.

Dr. Poag earned her undergraduate degree in English from Georgetown University in 1983. She received her medical degree from Weill Cornell Medical College in 1987, and completed residency training in psychiatry at Columbia University College of Physicians and Surgeons and New York State Psychiatry Institute, where she was also on faculty.

Dr. Poag has been devoted to medical student education since her own residency training, being awarded the Senior Resident Teaching Award at Columbia P.S. In 2010 she joined NYUSOM and directs and teaches in both the pre-clinical and clinical medical student programs. She has contributed to the CitS hqny "eyf s Aynt "AmktlvWmW AeYfu "AmksopWu AeYfu "AmksopWu AeYfukoplvWmW AkptoWmW Aeef "Amk- "AmkruuWmW Aeef "Amk



201 Paolo Fresco  
 201 Bernard L. Schwartz  
 201 Alice M. Tisch  
 2012 Larry A. Silverstein, (Hon. ' 2)  
 2011 William R. Berkley, BS (Stern '66), MBA  
 2010 Thomas S. Murphy, (Hon. '8 )  
 200 E. ohn Rosenwald, r. (Hon. '8 )  
 2008 Helen L. Kimmel, (Hon. '10)  
 Wilma "Billie" Tisch  
 2007 oel E. Smilow

201 Robert A. Press, MD '71, PhD (GSAS '7 )  
 201 Steven L. Galetta, MD  
 201 Larry A. Chinitz, BA (WSUC '7 ), MD '7  
 2012 Philip K. Moskowitz, MD  
 2011 Frederick Feit, BA (ARTS '68), MD '72  
 2010 oseph G. McCarthy, MD  
 200 Martin L. Kahn, MD '6  
 2008 Albert L. Goodgold, MD  
 2007 Frank C. Spencer, MD, (Hon. ' )

201 Marc M. Triola, MD ' 8  
 201 Victoria M. Harnik, MS (GSAS '81), PhD (GSAS '86)  
 201 oseph D. Zuckerman, MD  
 2012 Linda R. Tewksbury, MD ' 0  
 2011 Mel Rosenfeld, PhD  
 2010 Benard P. Dreyer, MD '70  
 200 Gerald Weissmann, MD '  
 2008 Anthony . Grieco, BS (ARTS '60), MD '6  
 2007 Martin S. Nachbar, MD '62

201 ef D. Boeke, PhD, DSc (Hon.)  
 201 Gordon . Fishell, PhD  
 201 Evgeny A. Nudler, PhD  
 2012 Danny Reinberg, PhD  
 2011 Ruth Lehmann, PhD  
 2010 Rochelle Hirschhorn, MD ' 7  
 200 Ruth S. Nussenzweig, Doc en Med, PhD, (Hon. '0 )  
 Victor Nussenzweig, Doc en Med, PhD, (Hon. '0 )  
 2008 Richard P. Novick, MD '  
 2007 Rodolfo R. Llin s, MD, PhD, (Hon. '0 )  
 David D. Sabatini, Doc en Med, PhD, (Hon. '0 )

### Department Chair or Institute Director

/6/8 11/<  
 Chair, Department of Child and Adolescent Psychiatry;  
 Director, NYU Child Study Center

"9,/<> /73+  
 Chair, Ronald O. Perelman Department of  
 Emergency Medicine

6/- 377/67+8 2  
 Chair, Department of Radiation Oncology

"9,/<> 98>197/<C 2  
 Director, NYU Langone Transplant Institute

3-2/6/ +1+89  
 Chair, Department of Biochemistry and Molecular  
 Pharmacology

9/6 # #-2?7+8  
 Chair, Department of Ophthalmology

>+3 )+8+3 2  
 Director, Institute for Computational Medicine

### Department Chair

+5 9.3-5  
 Ophthalmology

/A3= " 96.0<+85  
 Ronald O. Perelman Department of 9j4j7,x-j1j1j,x-j88,j(1)x498j7f Chairs.1r,s81r Ds41reps41rartment os41rf Rs41rad,(os41rf Rs41rBers7.reلمان Ds41reps41rT1C-Vs(4jly8jy42j7 Ronald O. E.1reps41r s41rss,rccs,rent F  
 Pharmacolo x17(jly8jy48j4j747j1j1j47j88,j9,1x498j7f d,y( ms71rFs81r ms41rw7)u. j4jx-,774sj7mpkAkP7C14h SkpS4)ACEjsBEp(BC)F(ö9Rö8RC9j7R4ISLUiT YBRCP1 nRCP1Bw)CCpCKl DYCPRA pC16VS pa





## Professors Emeriti

8-298C 7 : +<+9 Professor Emeritus of Surgery

#+<+8 98+= Professor Emeritus of Neurology

+<1+< > +< +>5B # Professor Emerita of Pediatrics

. A B 98. 8C Professor Emeritus of Neurology

64. ' 9: 0 # Professor Emeritus of Dermatology

<@B <3 2/ L Professor Emeritus of Radiology

" 3 2+< / @B Professor Emeritus of Medicine

/ <8+< / @B/ Professor Emeritus of Medicine

9<3 / < / @D 2 Professor Emeritus of Obstetrics and Gynecology

' / <8/ < ++= 2 Professor Emeritus of Microbiology

" 3 2+< % +<196- 2 Professor Emeritus of Biochemistry and Molecular Pharmacology

2<3>9: 2/ < +<2+66 2 Professor Emeritus of Radiology

9=: 2 - +<2C Lawrence D. Bell Professor Emeritus of Plastic Surgery

6D+, / >2 - +66 2 Professor Emerita of Microbiology

9= / ?=+- - 2B Professor Emeritus of Pharmacology

+@ +3 3 2 Professor Emeritus of Radiology and Medicine

928 3 296-98 2 Professor Emeritus of Neuroscience and Physiology

+<308 9D 2 Professor Emerita of Radiology

" ?>2 # ?= / 8DA/ 31 9- / 8 / . 2 98 Professor Emerita of Microbiology and Pathology

&3 >9< ?= / 8DA/ 31 9- / 8 / . 2 98 Professor Emeritus of Pathology

9/ 6 :: / 82/ 3 2 Professor Emeritus of Microbiology

. A+< +6 / = 2 Professor Emeritus of Environmental Medicine

/ <<C" 9, B= Professor Emeritus of Dermatology

+ 5 " 9= / 8, 6 >2 Professor Emeritus of Neuroscience and Physiology

+6 +8 " ?, B=98 2 Professor Emeritus of Neuroscience and Physiology

+@ #+, +>B3 9- / 8 / . 2 98 Frederick L. Ehrman Professor Emeritus of Cell Biology

" 9C #29< 2 Professor Emeritus of Environmental Medicine

<A B #3 1/ 6 2 Professor Emeritus of Ophthalmology

<3 #3 98 2 Professor Emeritus of Psychiatry and Biochemistry and Molecular Pharmacology

928 #3 : =98 2 Professor Emeritus of Neuroscience and Physiology

<3 #>98/ 2 Professor Emeritus of Psychiatry

+8 \$ &B / 5 2 98 Professor Emeritus of Microbiology

+8 &96-@+ 2 Professor Emeritus of Psychiatry

\$2/ 9. 9< " ' +?12 2 Professor Emeritus of Orthopedic Surgery

/ <+6 ' / 3=7 +88 Professor Emeritus of Medicine

+?6' 359@5C 2 Professor Emeritus of Ophthalmology and Physiology and Neuroscience

<2?<\* 3<B Professor Emeritus of Psychiatry

## Intramural Distinction

+8- C 7 9<9=9 appointed Section Chief, Pulmonary, Tisch Hospital

+C / > +=? 2 NYU Whitehead Fellowships for junior Faculty in Biomedical and Biological Sciences

928 / 8. 9 voted Teacher of the Year

U)]TJ0 Td71]TJd [95 0 J 0.2.25 07461 76]TJ 0.33 0,  
1-705-71-0(40-157-460-[T]0-57544-260-00 \$-1-10d [(0-24-0-577-500



## Intramural Distinction

---

←85 3 9←- / voted Teacher of t



## Extramural Distinction

---

98+2+8 92/ 8

Award of the Ame

awarded the Distinguished Service



## Extramural Distinction

9716- / @/ appointed to the Cancer Biomarkers Study Section, Center for Scientific Review, NIH appointed to chair a peer review panel of the FY16 Ovarian Cancer Research Program (OCRP) for the Department of Defense Congressionally Directed Medical Research Programs (CDMRP)

/ +6 / A3 listed in *New York Times Magazine* New York Super Doctors





## Endowed Professorships

---

0 / 1



# IN MEMORIAM

Research Professor of Psychiatry

Clinical Associate Professor of Anesthesiology, Perioperative Care and Pain Medicine

Research Professor of Cardiothoracic Surgery

Senior Associate Dean and Vice President for External Affairs (retired)

Teaching Assistant in Clinical Medicine (resigned)

Clinical Professor of Radiology; Professor Emeritus of Radiology

Associate Dean for Admissions and Financial Aid and Adjunct Professor of Medical School Administration (retired)

Clinical Professor of Medicine, former Associate Dean for Lenox Hill Hospital

Clinical Professor of Pediatrics (retired)

Clinical Professor of Medicine

Clinical Instructor in Medicine

Clinical Professor of Orthopaedic Surgery

Professor and Chair, Department of Cell Biology (resigned)

Clinical Assistant Professor of Child and Adolescent Psychiatry

Chair of the Department of Forensic Medicine and Professor of Forensic Medicine and Pathology (retired)

8+PDE QALDAN\_Ùe@D 93Peö•“5\_Y 90 eó 90 e÷ X•\_`“ W9 “en3—a1xa1Ú

# \$ # ) " "\$ & "  
8.</A "9=8,/ <1  
# \$ ) % " " )  
3-2/6/ +1+89  
" \$ " #%" ")  
?,</C +669A+C  
)  
"?>2 /27+88 2  
# \$ #) \$)  
/6/8 11/<

#)#\$ # \$ # # \$ \$ % \$  
/0 9/5/ 2 #- 98  
# # \$ \$ % \$ & " \$  
+B 9=>+ 2  
\$ " # \$ # # \$ \$ % \$  
<?-/ <98=>/38  
"%# # \$ \$ % \$ " \$ \$  
#>/@/8 " 6+8+1+8  
\$ " # \$ # # \$ \$ % \$  
?.3>2 # 9-27+8  
# " # \$ \$ % \$ % "  
"?>2 /27+88  
)% \$ " # \$ # \$ \$ % \$  
"9,/ <> 98>197/<C 236  
" % \$ \$ " " \$ "  
/84+738 //6 2  
# \$ \$ % \$ " # \$ "% \$ &  
# \$ #%" ")  
. ? + < . 9 " 9 . < 3 1 ? / D #  
|  
# \$ % ) \$ "  
/6/8 385 11/<  
# \$ \$ % \$ " & \$ # % \$  
+ < - \$ < 3 9 6 + H  
)% % " # # \$ \$ % \$  
" 3 - 2 + < . ' \$ = 3 / 8 2 3 6  
# \$ \$ % \$ " % \$ \$  
> + 3 ) + 8 + 3 2



" 3 2+< 98912?/  
 Senior Vice President for Medical Center Strategic Planning  
 and Business Development

<3D <+8-93- I  
 Chief Medical Officer and Patient Safety Officer for  
 NYU Hospital